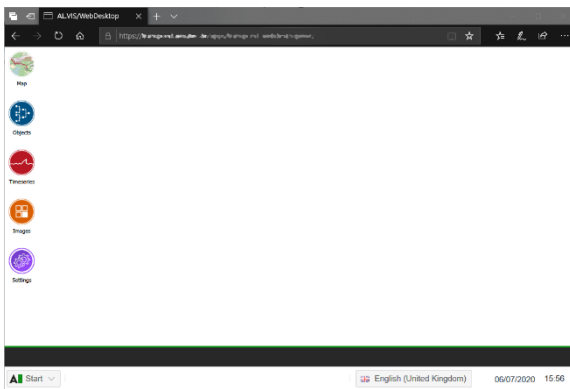


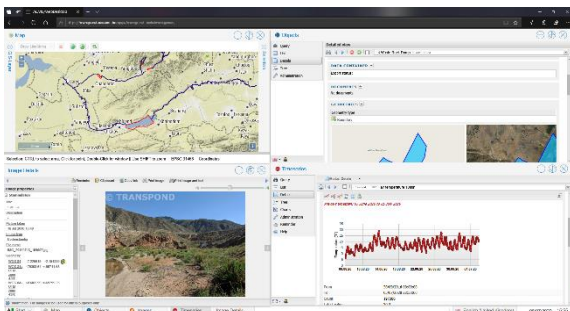


Brief description

AL.VIS/WebDesktop links web applications and maps in a secure and user-friendly way. The web applications are executed in windows which allows simultaneous work. Moreover, the WebDesktop offers various interfaces for interaction with the map and other applications and provides the central administration of all application permissions.



AL.VIS/WebDesktop start window



Multiple application windows started. The example shows a map and the ALVIS applications.

Product description

Flexible application environment

- Window technology
- Multilingual user interface
- Suitable for mobile devices
- Interaction and links between different complex applications and their data
- Free application registration

Map presentation

- Presentation of various GIS data
 - PostGIS geometries
 - Oracle SDO geometries
 - Shape files
 - Raster formats TIFF, GeoTIFF, GeoPackage
- Use of background maps such as OpenStreetMaps
- Selection of elements from the map, switch to the application
- Display of geometries from the application on the map

Application integration

- Framework for connecting web applications
- Provision of JavaScript APIs for calling functions
- Detailed rights management (e.g. starting, writing, administration)



Administration

- Definition of map themes, data sources and their presentation
- Management of the integrated applications and configuration of settings and rights management
- Manage users and groups to define rights

Security and rights management

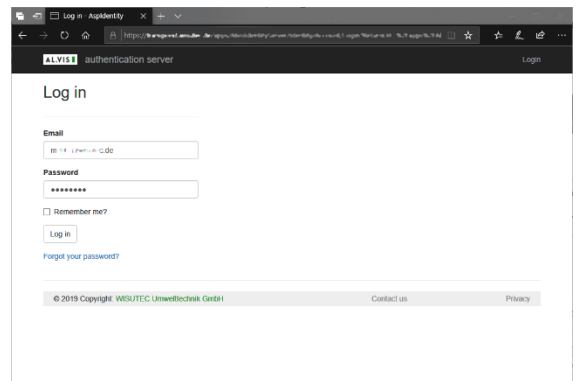
- Secure login procedure with IdentityServer based on OpenIDConnect
- Optional 2-factor authentication
- Optional Windows login
- Role-based authorization

Technology

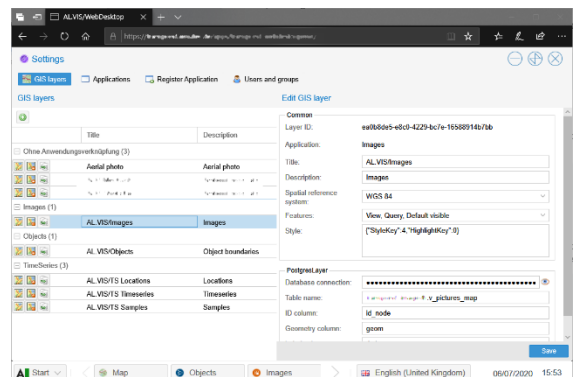
- Microsoft .NET Framework 4.7
- Ext.NET-based Web interfaces
- Windows Server 2012 R2 +
- supported Web-Browser: Microsoft Edge, Firefox, Opera, Chrome, Internet Explorer
- Database system: Daten PostgreSQL/PostGIS oder Oracle

Languages

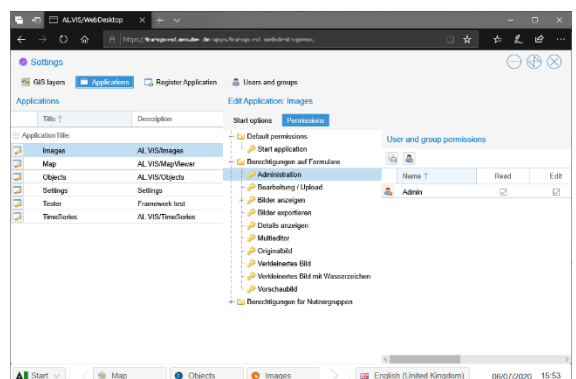
- German, English and Russian



Secure login via IdentityServer



Management of GIS-layer



Administration of application rights